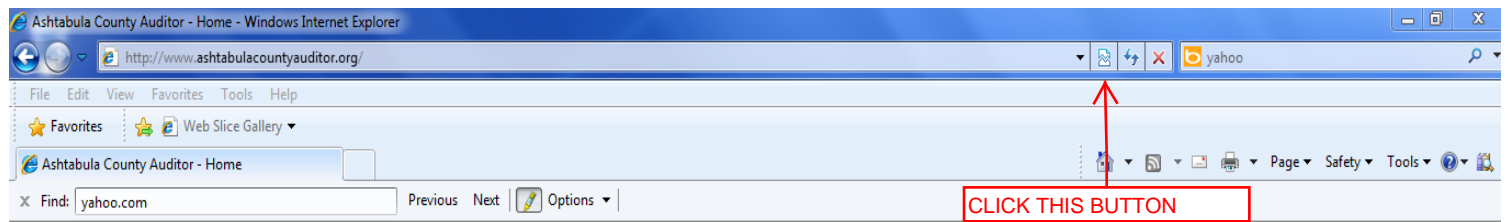


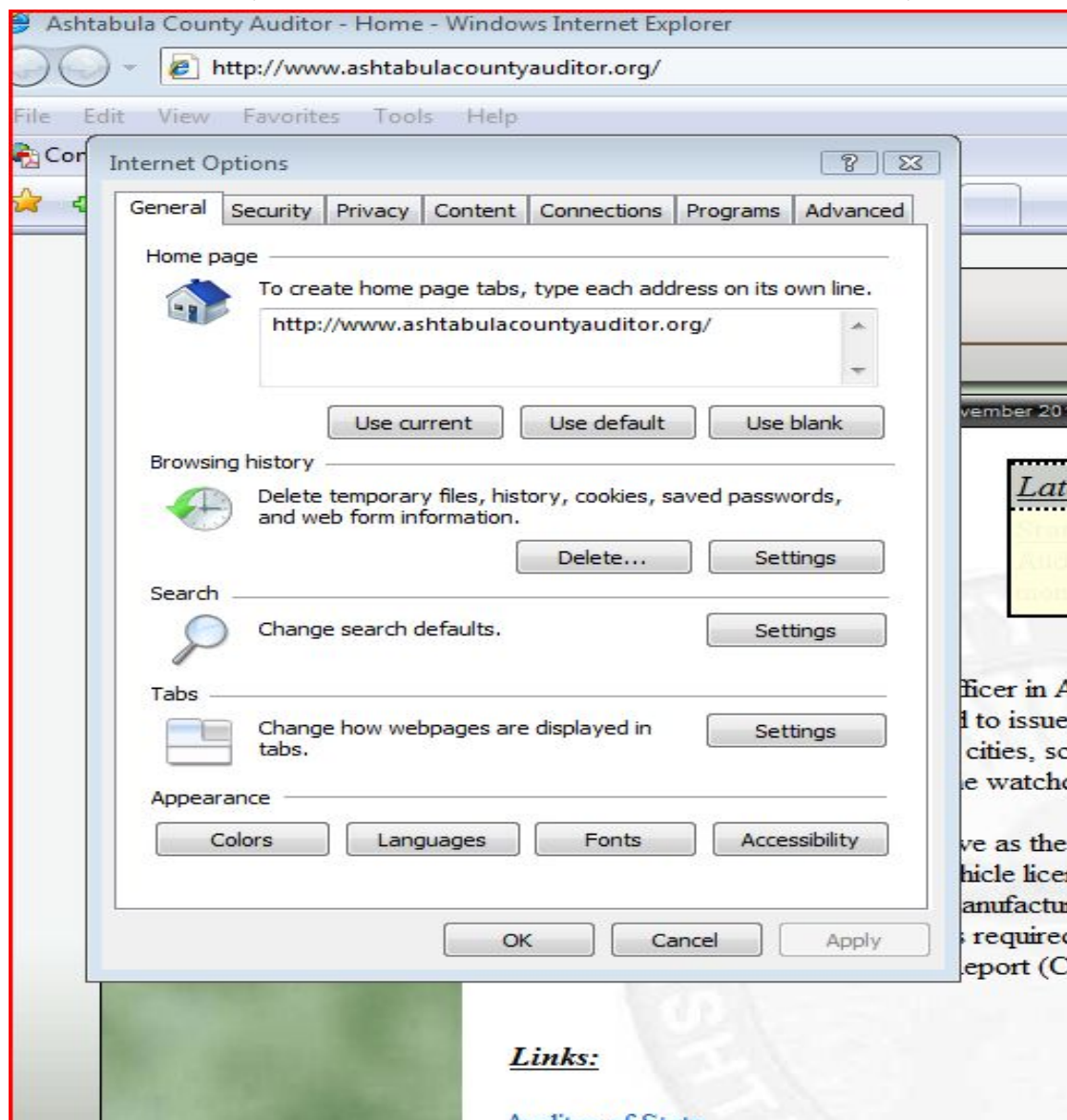
TO OUR ASHTABULA COUNTY AUDITOR WEBSITE USERS:

THERE ARE KNOWN COMPATIBILITY ISSUES WITH THE WEBSITE IF YOU ARE USING INTERNET EXPLORER VERSION 9. IF YOU ARE EXPERIENCING VIEWING DIFFICULTIES AT THIS WEBSITE, PLEASE FOLLOW THESE INSTRUCTIONS:

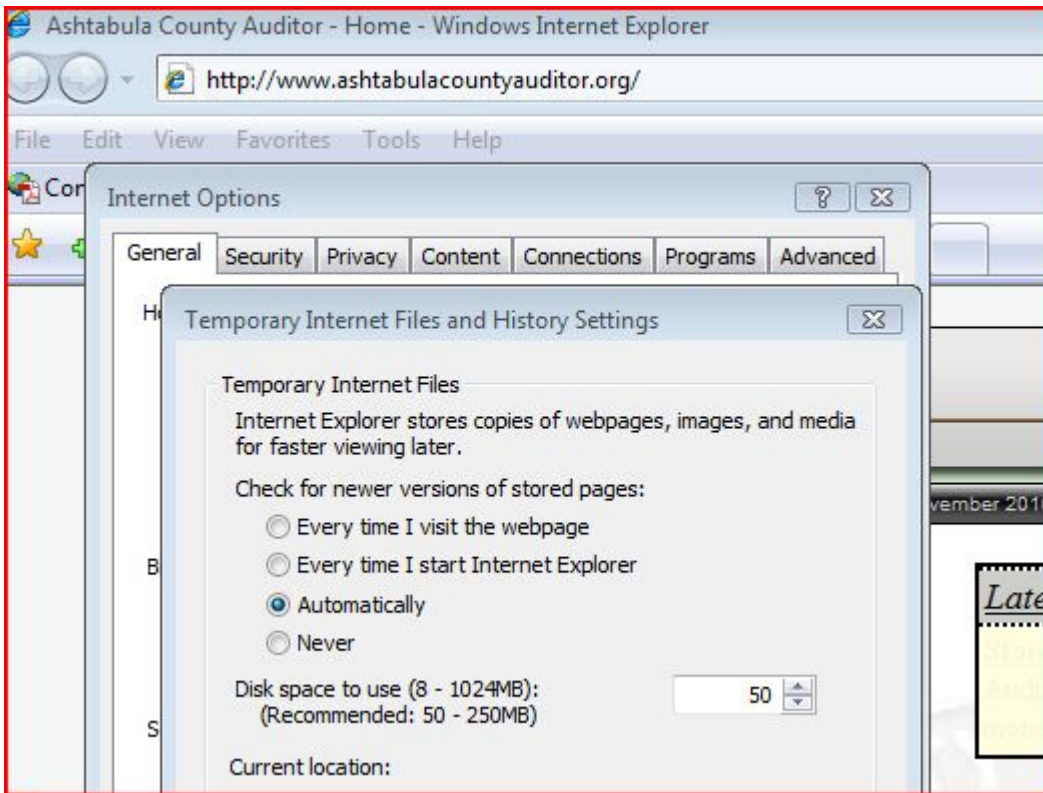


IN THE PICTURE ABOVE YOU SEE A BUTTON WITH TWO ARROWS NEXT TO THE RED X. **TO THE LEFT OF THE ARROWS** CLICK THAT BUTTON TO ENABLE YOUR BROWSER'S COMPATIBILITY MODE SETTINGS. IN MOST CASES, IF YOU ARE USING VERSION 9 THIS WILL ALLOW FOR PROPER VIEWING.

ANOTHER COMMON PROBLEM OCCURS WHEN WE UPDATE THE WEB PAGES. IF YOUR BROWSER IS NOT SET TO AUTOMATICALLY UPDATE, PLEASE FOLLOW THESE INSTRUCTIONS: CLICK THE LEFT MOUSE BUTTON ON THE MENU COMMAND "TOOLS ", CLICK THE LEFT MOUSE BUTTON ON INTERNET OPTIONS, THIS WINDOW SHOULD APPEAR:



UNDER BROWSING HISTORY SETTINGS CLICK THE LEFT MOUSE BUTTON ON THE "SETTINGS" BUTTON AND THIS WINDOW WILL APPEAR:



IF THE CURRENT SETTING IS NEVER, PLEASE CHANGE TO ONE OF THE OTHER SETTINGS. THE FIRST OR THIRD SETTINGS ARE THE PREFERRED SETTINGS.

IF YOU ARE HAVING OTHER PROBLEMS THAT ARE LIMITED ONLY TO:

[HTTP://WWW.ASHTABULACOUNTYAUDITOR.ORG](http://www.ashtabulacountyauditor.org)

PLEASE E-MAIL ME AT: WEBMASTER@ASHTABULACOUNTY.US

THANK YOU,

WEBMASTER